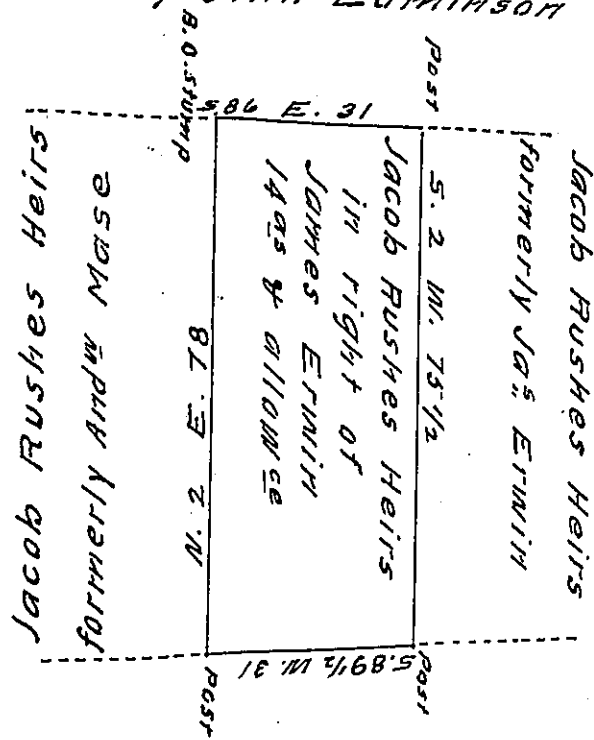


Jacob Rushes Heirs
formerly John Edmihson



CHRISTIAN FATHMAN

A draught of a piece of land situate in Montgomery township Franklin (late Peters township Cumberland) County containing fourteen acres and the usual allowance of six p cent for roads. Surveyed May 16th 1811 in pursuance of a warrant granted James Edmihson dated September²⁸th 1773

Thomas Poe, D.S.

To Andrew Porter Esq^r
Surveyor General of Penn^a

IN TESTIMONY that the above is a copy of the original remaining on file in the Department of Internal Affairs of Pennsylvania, made conformably to an Act of Assembly approved the 16th day of February, 1833, I have hereunto set my Hand and caused the Seal of said Department to be affixed at Harrisburg, this eleventh day of November 1908

Henry Howard
Secretary of Internal Affairs.